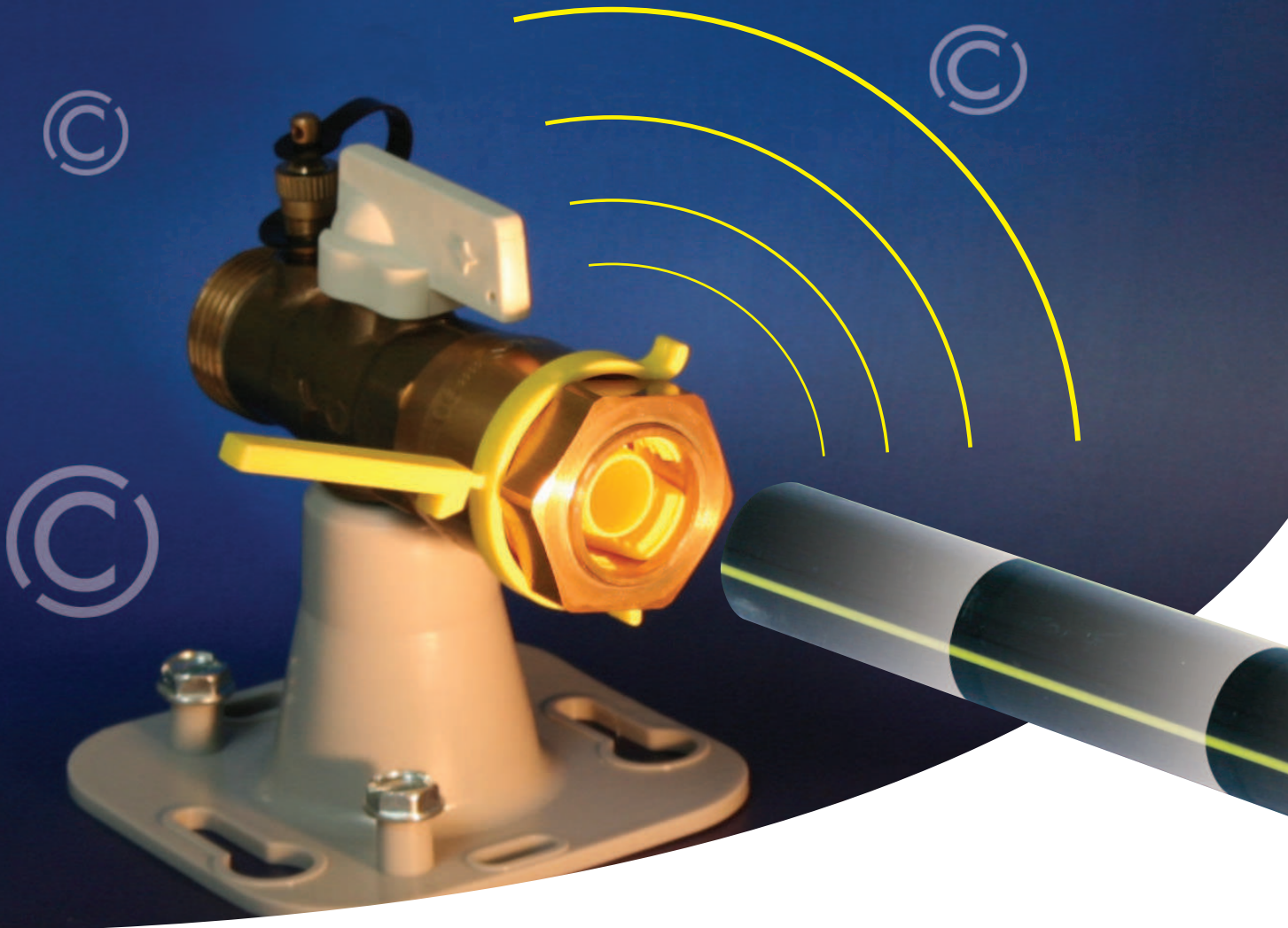


# PE ©LIP

New generation Pe transition fitting  
when **SIMPLICITY** rhymes with **SECURITY**



After listening to Gas Industry professionals, we are pleased to introduce a simple and reliable solution for all your mechanical Pe transition fitting requirements.

- © Direct Pe insertion with no prior disassembly
- © No special tools, a standard spanner is all that is required
- © Positive nut stop with no specific tightening torque
- © Rapid installation with visual control
- © Reusable fitting with no need to change the sealing elements
- © Fitting certified by **NF** EN 1555 standard



**PE ©LIP**, new generation transition available on our full range of fittings  
PATENTED PRODUCT



le **GAZ** en toute sécurité

[www.chuchu-decayeux.com](http://www.chuchu-decayeux.com)

CHUCHU DECAYEUX - BP 80002 - 80520 WOINCOURT - FRANCE - Tel. : +33 322 207 525 / Fax : +33 322 303 765 - [export@chuchu-decayeux.fr](mailto:export@chuchu-decayeux.fr)

COMPANY CERTIFIED ISO 9001

# Connecting with PE CLIP in 4 steps

## Example of installation on a meter isolation valve

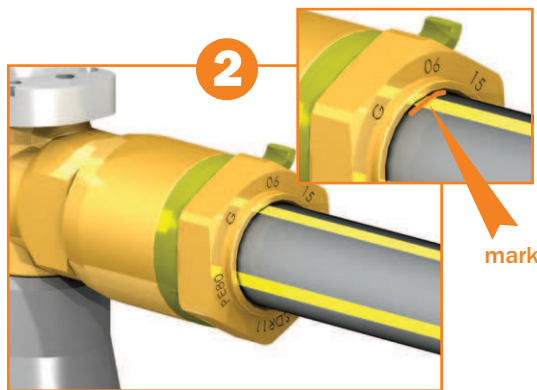
NO TORQUE WRENCH REQUIRED



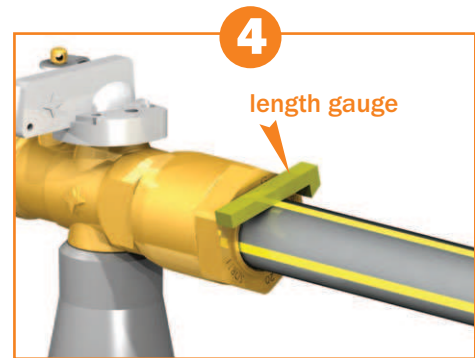
Break off the **removable length gauge** and use it to mark up the length of pipe to be inserted in the fitting ( the pipe end must be perpendicular and free from abrasions, burrs, scratches etc. )



Remove the **clip** and after securing the valve tighten until reaching the positive end stop.

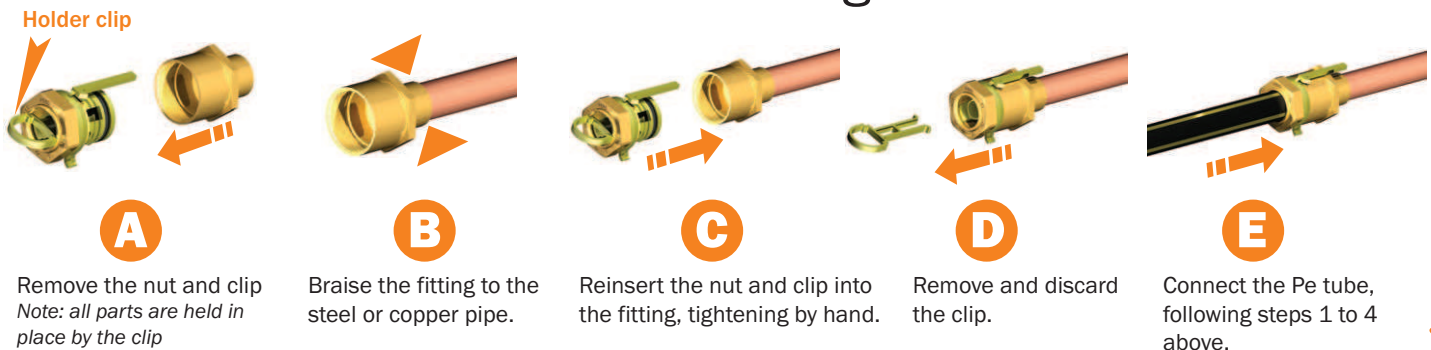


Insert the tube into the fitting pushing up to the **mark** made in step 1.



Check, using the **length gauge**, that the pipe is perpendicular to the fitting and placed according to the mark.

## For braised fittings



**A**  
Remove the nut and clip  
*Note: all parts are held in place by the clip*

**B**  
Braze the fitting to the steel or copper pipe.

**C**  
Reinsert the nut and clip into the fitting, tightening by hand.

**D**  
Remove and discard the clip.

**E**  
Connect the Pe tube, following steps 1 to 4 above.



le GAZ en toute sécurité

[www.chuchu-decayeux.com](http://www.chuchu-decayeux.com)

CHUCHU DECAYEUX - BP 80002 - 80520 WOINCOURT - FRANCE - Tel. : +33 322 207 525 / Fax : +33 322 303 765 - [export@chuchu-decayeux.fr](mailto:export@chuchu-decayeux.fr)

COMPANY CERTIFIED ISO 9001